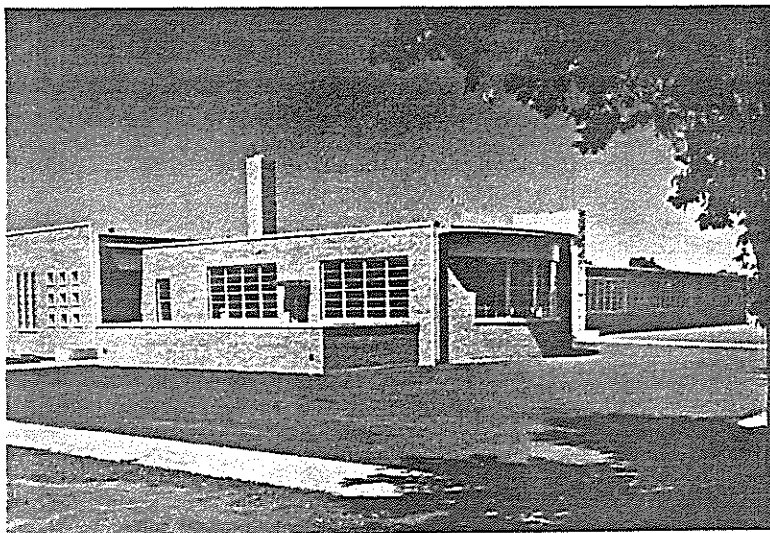


---

---

ELGIN PUBLIC SCHOOLS  
ELGIN, ILLINOIS



COURIER-NEWS PHOTO

HARRIET GIFFORD SCHOOL

*"a small school for small children"*

OPEN HOUSE

SPONSORED BY  
GIFFORD PARENT-TEACHER ASSOCIATION  
AND  
BOARD OF EDUCATION

Tuesday - Wednesday - Thursday  
October 25, 26, 27, 1949  
7:00 P.M. - 9:00 P.M.

---

---

---



---

### BUILDING CHRONOLOGY

1947-1948	- - - - -	Planning by primary teachers of the teaching staff.
March 27, 1948	- - - - -	Architects engaged.
April 10, 1948	- - - - -	Referendum to purchase site and build a school. Vote: 1890 for; 294 against.
July 15, 1948	- - - - -	Site purchased.
July 22, 1948	- - - - -	Contract let for foundation.
August 2, 1948	- - - - -	Area annexed to city.
September 25, 1948	- - - - -	Contract let for building.
September 7, 1949	- - - - -	School opened.

### COST OF BUILDING

Site	- - - - -	\$ 12,000.00
Foundation	- - - - -	31,700.00
Building	- - - - -	208,684.00
Grading—Landscaping	- - - - -	12,898.00
Architects	- - - - -	14,423.00
Sidewalks—Drives	- - - - -	2,144.00
		<hr/> \$281,849.00

---



---

---

---

BOARD OF EDUCATION

VINCENT COLEMAN, President

JAMES W. BRIDGE	RAYMOND M. PEARSALL
S. MILLS ENO	E. O. SOUTHARD
ALFRED Y. KIRKLAND	FRANK D. URIE
DONALD F. MELMS	DONALD M. VALENTINE
CHAUNCEY H. WELLS, Chr., New Building Comm.	

ADMINISTRATION

ORRIN G. THOMPSON Superintendent of Schools	MARVIN L. BERGE Assistant Superintendent of Schools
WILLARD BEEBE Secretary to Board of Education	

GIFFORD P.T.A. OFFICERS

MR. JOHN BROWN	- - - - -	President
MRS. ROBERT SWIFT	- - - - -	Vice-President
MR. ELMER BAKER	- - - - -	Treasurer
MISS MARILYN EWING	- - - - -	Secretary

---

---

---

---

ARCHITECTS

LeROY W. THOMPSON, A.I.A.  
and  
ELMER GYLLECK and ASSOCIATES  
Associated Architects and Engineers  
Elgin, Illinois

CONTRACTORS

General Building Contractor - - - - ILLINOIS HYDRAULIC  
CONSTRUCTION CO.  
Elgin, Illinois

Foundation - - - - - ARNOLD LIES COMPANY  
Aurora, Illinois

Grading - - - - - VALLEY ENGINEERING COMPANY  
St. Charles, Illinois

Landscaping - - - - - SIEMENS NURSERY  
Elgin, Illinois

SUB-CONTRACTORS

Heating and Ventilating - - - - - A. J. Ironside, Elgin, Ill.

Plumbing - - - - - Martin F. Runge, Elgin, Ill.

Wiring and Electrical Work - - - - - F. E. Nohi, Elgin, Ill.

Millwork and Cabinet Work - - - - - Rinchimer Bros. Mfg. Co., Elgin, Ill.

Lath and Plaster - - - - - Arthur H. Carlson, Elgin, Ill.

Painting and Wood Finish - - - - - C. E. Jakes Paint Co., Elgin, Ill.

Roofing and Sheet Metal Work - - - - - Elgin Sheet Metal Co., Elgin, Ill.

Wall-Fill Roof Insulation - - - - - Clifford Andrews, Elgin, Ill.

Lumber - - - - - Elgin Lumber & Supply, Elgin, Ill.

Ceramic Tile and Cement - - - - - H. W. Huber Co., Elgin, Ill.

Common Brick and Waylite Block - - - - - Wm. H. Brady Co., Elgin, Ill.

Sand and Gravel - - - - - Chicago Gravel Co., Elgin, Ill.

Face Brick and Gypsum Tile - - - - - Shurtleff Co., Elgin, Ill.

Indiana Limestone - - - - - Bloomington Limestone Corp., Bloomington, Ind.

Quarry Tile - - - - - Northern Illinois Terrazzo & Tile Co., Rockford, Ill.

Aluminum Windows - - - - - Adams & Westlake Co., Elkhart, Ind.

Sanymetal Toilet Partitions - - - - - George Nicoloff, Elgin, Ill.

Glass and Glazing - - - - - Pittsburgh Plate Glass Co., Elgin, Ill.

Window Cleaning - - - - - R & K Cleaning Service, Elgin, Ill.

Asphalt Tile and Linoleum - - - - - Thos. Moulding Co., Chicago, Ill.

Counter Tops - - - - - Johnson Plastics, Elgin, Ill.

Finish Hardware - - - - - Lloyd Ziegler Hardware Co., Elgin, Ill.

Structural Steel - - - - - Mississippi Valley Structural Steel Co., Melrose Park, Ill.

---

---

TEACHING STAFF

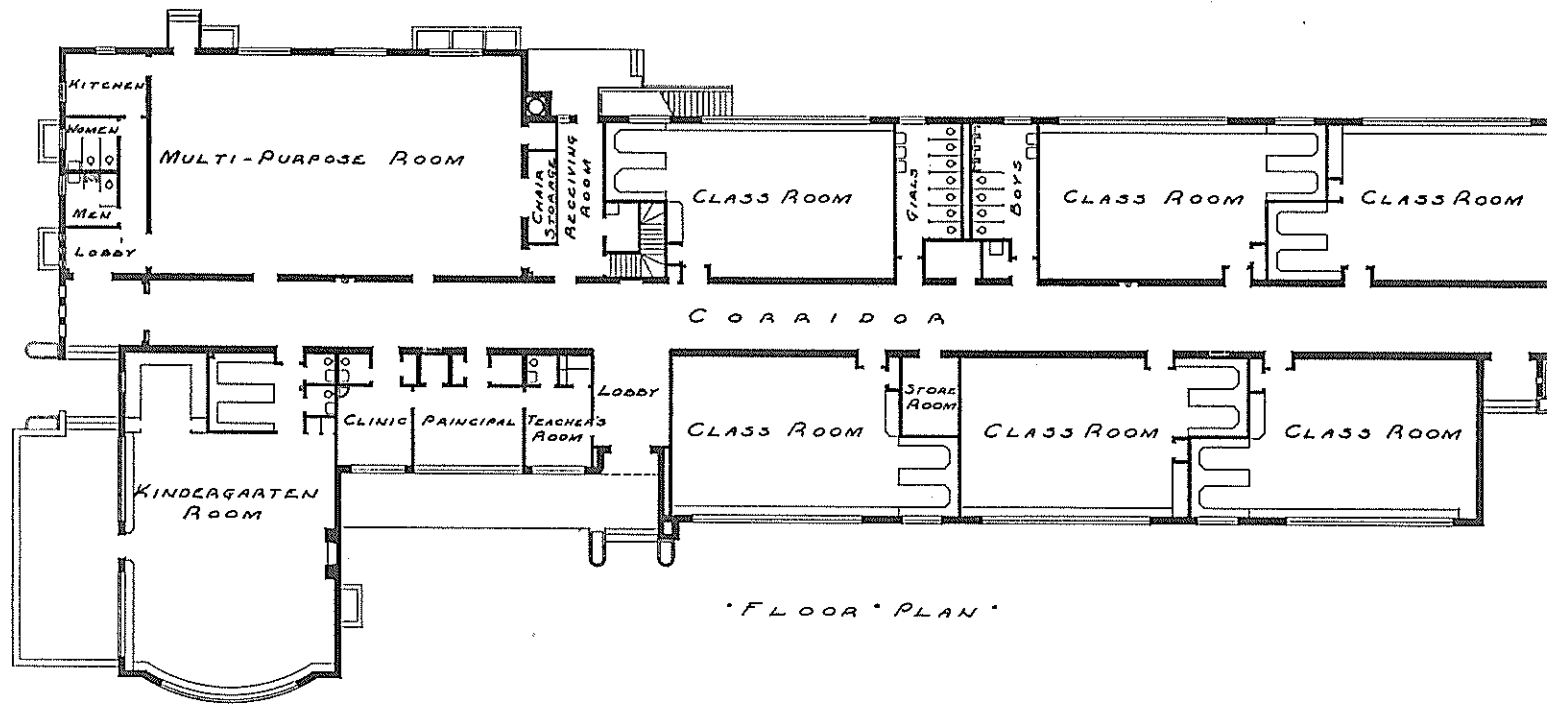
LORRAINE RIPCZINSKI	- - - - -	Kindergarten
MARION KORBY, Principal	- - - - -	First Grade
MARILYN EWING	- - - - -	First Grade
INA SCHICKER	- - - - -	Second Grade
THELMA CHATHAM	- - - - -	Second Grade
PRISCILLA CLENDENING	- - - - -	Third Grade
EDNA ALTHOF	- - - - -	Fourth Grade
RONALD JOHNSON	- - - - -	Custodian - Engineer

OTHER PROFESSIONAL STAFF SERVING GIFFORD SCHOOL

E. ARTHUR HILL	- - - - -	Director of Music
LOIS PAULSON	- - - - -	Music
E. G. McLEAN	- - - - -	Physical Education
ETHEL LATTA	- - - - -	Director of Art
MARION STEERS	- - - - -	Art
PETER FARMAKIS	- - - - -	Instrumental Music
JEAN MORGAN	- - - - -	Instrumental Music
FRANCIS LEONARD	- - - - -	Instrumental Music
JEWELL BRUNNER	- - - - -	Speech Correction
DOROTHY SORENSEN	- - - - -	Counselor
E. C. WAGGONER	- - - - -	Visual Education
CLEONE O'BRIEN	- - - - -	Director of Child Study
CLARA LUND	- - - - -	Nurse
A. E. SCHMIDGALL	- - - - -	Supervising Engineer

---

---





*a word about*  
**HARRIET GIFFORD**

ELGIN'S first school opened in 1837, with Miss Harriet Gifford as the teacher. The school was held in the cabin of James T. Gifford and was attended by ten children of Elgin's first citizens. The parents of these children paid five cents per day for the privilege of having their children attend.

"Aunt Harriet" Gifford, as she was affectionately known, maintained her school in the Gifford Cabin for four years. In 1841, the Elgin Chapel, a community church structure at the corner of DuPage and Geneva Streets, was used for school purposes.

Miss Gifford was born in Sherburne, New York, October 27, 1814. She came to Elgin in 1835, and at all times played an active part in the religious and cultural life of the community. She lived at the southwest corner of Villa and South Gifford Streets for over fifty years, until her death in 1893.

The Elgin Public School system, as a tax supported institution, came into being in 1851.

---

*for our children . . .*

OUR newest elementary school symbolizes the progressive spirit of a forward looking community. The building is the outgrowth of the cooperative efforts of the Board of Education, Parent-Teacher Association, members of the faculty, and the associate architects. Its functional design provides for the multiplicity of activities essential to a modern community school program.

The multi-purpose room with its adjoining kitchen and rest rooms will provide a meeting place for the adult organizations and youth serving groups in the Gifford District. In addition to the multi-purpose room, the building includes a beautiful kindergarten, six large, informal classrooms, a principal's office, a teachers' room, and a clinic.

The health and happiness of the children have been of foremost concern in planning the details of the classrooms. The color, the furnishings, and the arrangement of each of the rooms contribute to a warm, friendly atmosphere encouraging the child's development—creatively, emotionally, and intellectually.

ORRIN G. THOMPSON  
Superintendent of Schools

---